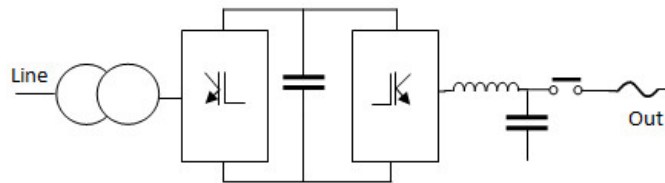


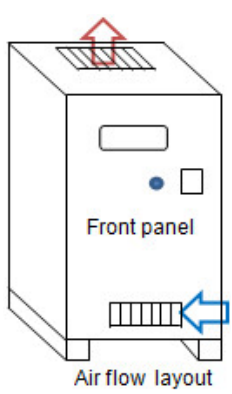
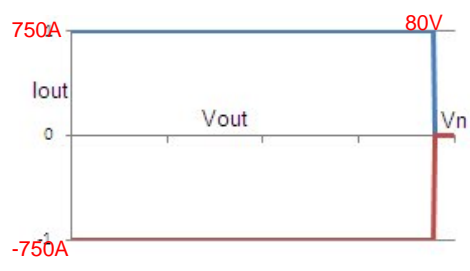
Fast DC bidirectional Power Supply with line regenerator



Output features	
Max output Power	60KW
Voltage output	0 ÷ 80 V
Voltage setting resolution	0.04 V
Current output	0 ÷ +/-750 A
current setting resolution	0.38 A
Max regenerated Power	60KW
output resistor simulated	0 ÷ 1 Ohm
resistor setting resolution	0.001 Ohm
power limitation settable	0 ÷ 60 KW
power limitation resolution	0.06 KW
Accuracy CV	0.2% f.s.
Accuracy CC	0.2% f.s.
Line regulation	0.1% f.s.
Load regulation	0.2% f.s.
Linearity	0.2% f.s.
Max offset	0.2%
Max ripple	0.2% f.s.
Settling time for change of load by 50%	2 mS typ.
Slew rate 10-90%; 90-10%	1 mS typ.
Max output compensation by sensing line	8V
Output connectors	clamps or copper rods
Parallel mode allowed by simply connection of dedicated cable	
voltage and current settling by: fine potentiometer on panel, analog input 0 ÷ 10V, RS485	
internal resistor and output power settling by: analog input 0 ÷ 10V, RS485	
Interface	RS485
Digital I/O	2In / 2Out (24V)
Emergency input	external NC
Parameter set	software on PC

Measurements	
voltage with 3.5-digit digital voltmeter	
accuracy	0,2%fs
resolution	0.04 V
current with 3.5-digit digital amperometer	
accuracy	0,2%fs
resolution	0.38 A
Supply	
Voltage input	400V 3F ± 10%
Frequency	45 ÷ 65Hz
Max line current	104 A
cosphi	0.95
Max inrush current	187 A
Line protection	Automatic switch MCB
Line connection	internal clamps
Front Panel	
Line MCB	
Switch run - stop	
Voltage adjustment potentiometer	
Current adjustment potentiometer	
connector I/O + serial	
Other	
Dimensions l x w x h (approx)	1200 x 800 x 1900 mm
Weight (approx)	700 Kg
operating temperature	5 ÷ 40°C
Storage	-5 ÷ 60°C
Protection rating	IP20B
Cooling	Forced air
Acoustic noise at 1m	
safety and EMC	CE (EMC e LVDT)
Insulation	
Line / output - gnd	2500 Vrms
Output / gnd	1500 Vrms
Max operation voltage output - to gnd	723Vrms or +1020Vdc or -1100Vdc

Fast DC bidirectional Power Supply with line regenerator



Protection			
Overload	Yes	Short Circuit	Yes
Line undervoltage	Yes	Line overvoltage	Yes
extra regeneration	Yes	Over temperature	Yes
Anti islanding	Yes		

Note: the max output power and max output voltage is defined to output terminals, without any sensing compensation

This datasheet must be approved by ZENONE ELETTRONICA

The technical specifications contained in this page is subject to change without notice

Available from



**CALTEST**  
Instruments Ltd  
Specialists in power  
and instrumentation

## Power sources and test instrumentation solutions

Caltest have been providing power sources and test instrumentation solutions for over 20 years and are proud to represent a number of industry leading manufacturers.

As well as supplying world class power sources and test instrumentation Caltest also has a service centre and UKAS calibration laboratory.

## NEED HELP?

CALL US:

**01483 302 700**

**or visit our website for more details**

Caltest Instruments Ltd  
4 Riverside Business Centre  
Walnut Tree Close  
Guildford  
Surrey GU1 4UG  
United Kingdom

Tel: +44 (0) 1483 302 700

Fax: +44 (0) 1483 300 562

**sales@caltest.co.uk**

**www.caltest.co.uk**

Sales • Rentals • Service • UKAS Calibration

